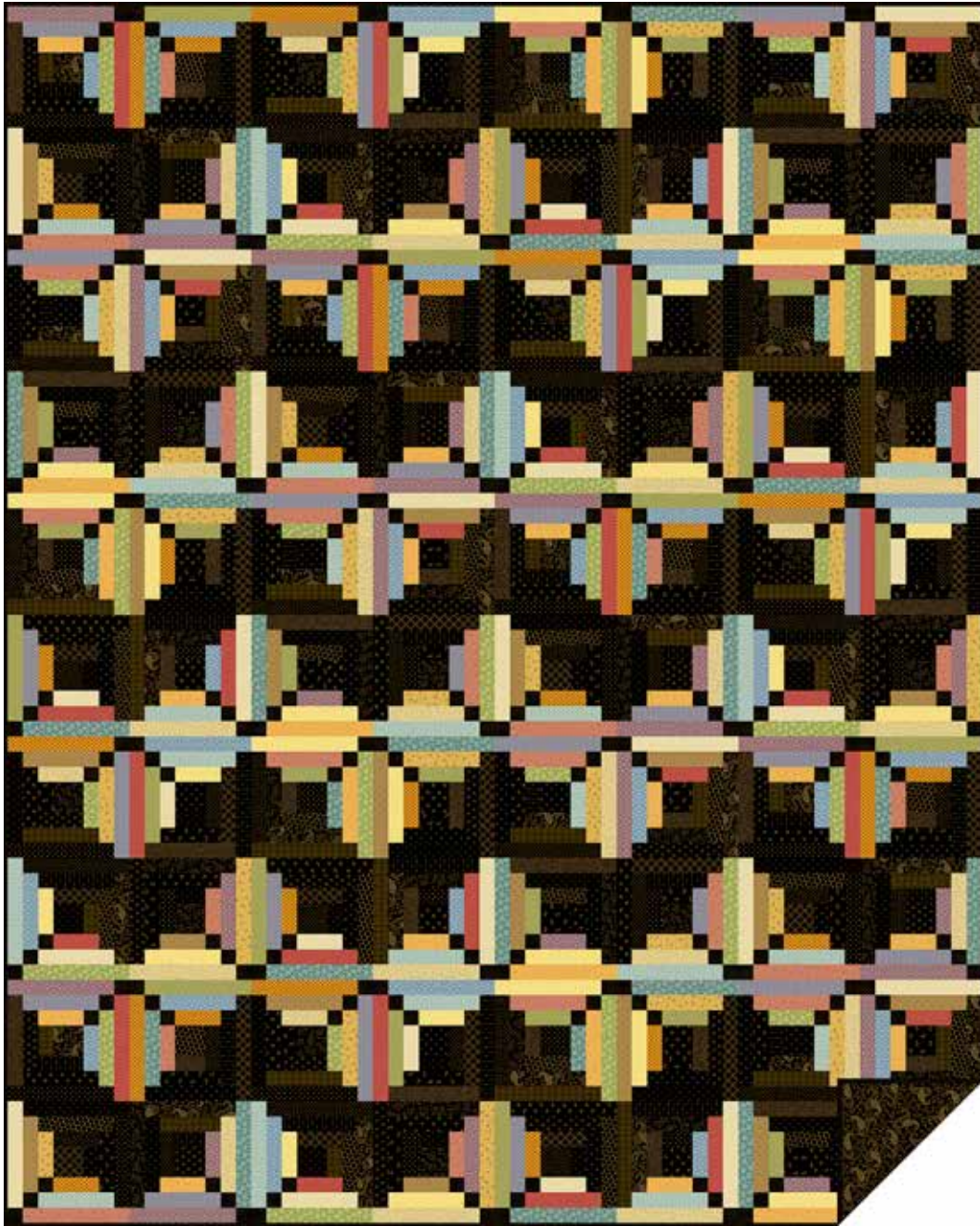


Cast Iron

KATHY HALL



Bright Morning Quilt
designed by: **Janet Houts**

Quilt Size: **64" x 80"**

andoverfabrics.com

About Cast Iron

Cast Iron features a mix of small patterns in rich dark blacks that make scrappy quilts shine!

andover



[makower uk](http://makower.uk)

Free Pattern Download Available

1384 Broadway New York, NY 10018
Tel. (800) 223-5678 • andoverfabrics.com

Bright Morning Quilt

Introducing Andover Fabrics new collection: **CAST IRON** by Kathy Hall • Quilt designed by Janet Houts

Quilt finishes 64" x 80" • 20 Blocks: 16" x 16"

Long a favorite of quilt makers, the perennial Log Cabin pattern is updated here with additional dark squares at the ends of some "logs." This detail gives the pattern a more contemporary feel, and the scrappiness allows each block to be unique. The throw is easy enough for a beginner.

Cutting Directions

Note: Read assembly directions before cutting patches. All measurements are cut sizes and include ¼" seam allowances. A fat ¼ is an 18" x 20"-22" cut. WOF designates the width of fabric from selvedge to selvedge (approximately 42" wide).

Cutting for one Log Cabin Block (read step 1)

Fabric A

Cut (3) squares 1½" x 1½"

Black Prints

Cut (1) center square 2½" x 2½"

Cut (1) strip 1½" x 2½"

Cut (1) strip 1½" x 3½"

Cut (1) strip 1½" x 4½"

Cut (1) strip 1½" x 5½"

Cut (1) strip 1½" x 6½"

Cut (1) strip 1½" x 7½"

Bright Prints

Cut (2) strips 1½" x 3½" (different prints)

Cut (2) strips 1½" x 5½" (different prints)

Cut (2) strips 1½" x 7½" (different prints)

Fabric A

Cut (8) strips 2½" x WOF for binding

Cut (240) squares 1½" x 1½"

15 Blacks

Cut (80) center squares 2½" x 2½" total

Cut (80) strips 1½" x 2½"

Cut (80) strips 1½" x 3½"

Cut (80) strips 1½" x 4½"

Cut (80) strips 1½" x 5½"

Cut (80) strips 1½" x 6½"

Cut (80) strips 1½" x 7½"

16 Brights

Cut (160) strips 1½" x 3½" total

Cut (160) strips 1½" x 5½"

Cut (160) strips 1½" x 7½"

Backing

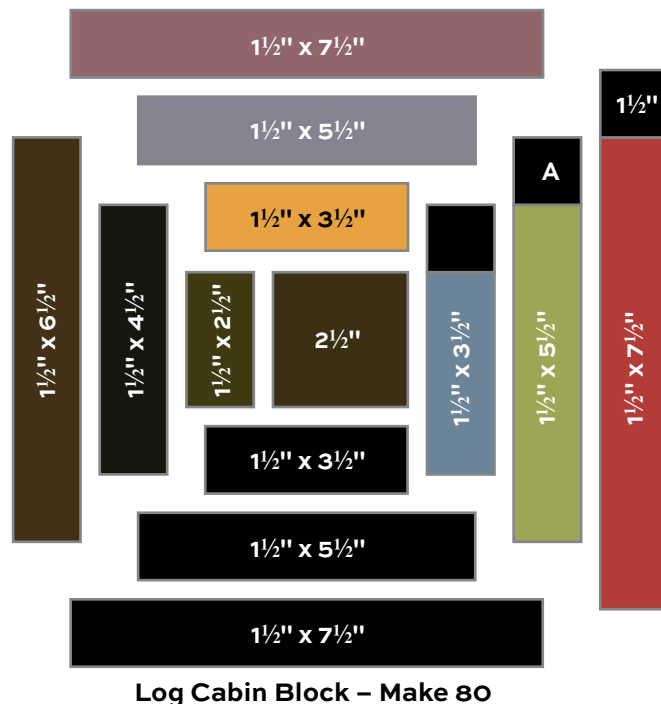
Cut (2) panels 36" x 88", pieced to fit quilt top with overlap on all sides

Fabric Requirements

Fabric A	blocks, binding	Yardage	Fabric
15 Blacks	blocks	1¾ yards fat ¼ each	9305-K1
	9300-K1 9301-K1	9302-K2	9303-K1
	9304-K2 9306-K2	9307-K2	9308-K
	9309-K 9310-K	9311-K	9312-K1
	*9313-K 9314-K	9315-K	
16 Brights	blocks	fat ¼ each	
	8999-LN 9003-P	9004-N1	9004-R
	9013-N 9015-G	9015-Y	9016-N
	9017-T 9018-B	9018-P	9019-O
	9021-O 9021-Y	2022-G	2022-T
*Backing		5 yards	9313-K

Making the Quilt

1. From each fat quarter fabric, cut a variety of strip lengths. Cut the total needed as listed. Referring to the Log Cabin Block diagram, arrange different black and bright strips and 3 Fabric A 1½" squares around the center 2½" square. Do not use the same print twice in a block. Sew the Fabric A squares to the ends of appropriate bright strips. Join the strips to the center square. Hint: In each of the 3 "rounds" of piecing, join the left strip on first, and then the top and bottom strips. Sew the pieced bright strip on the right. Repeat this order for each round.

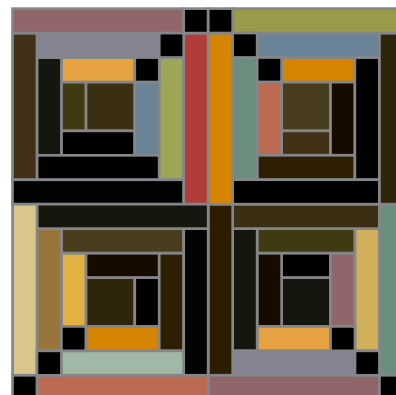


Bright Morning Quilt

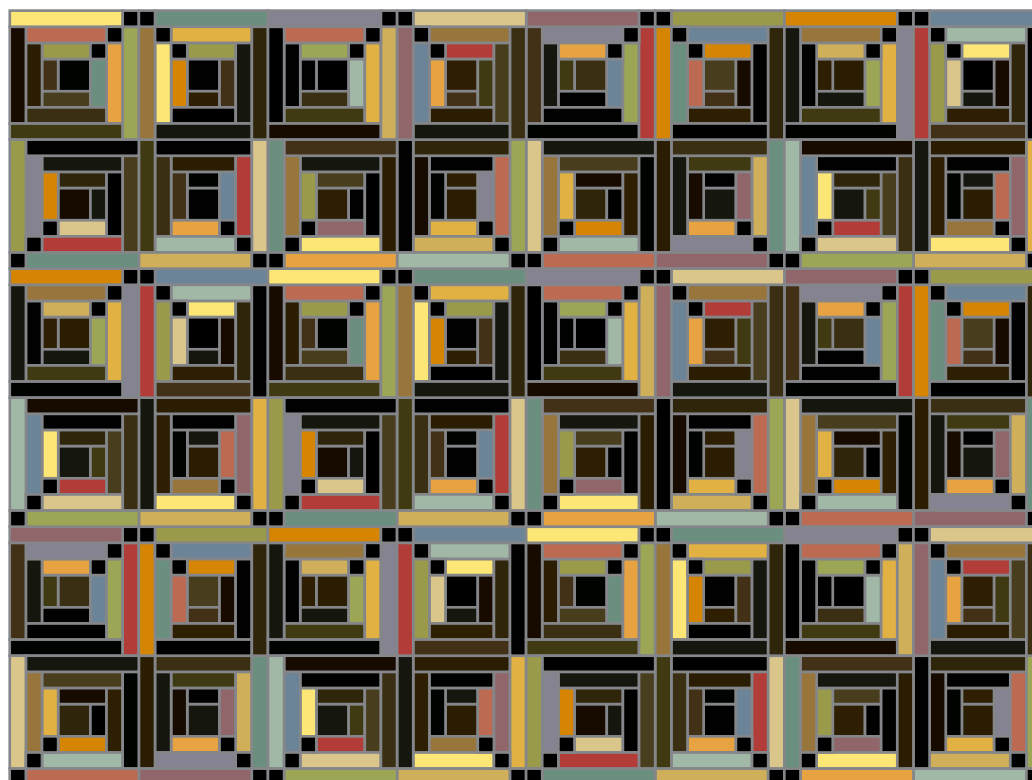
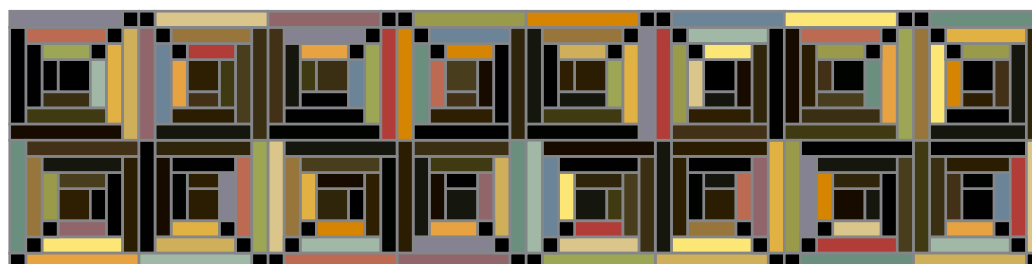
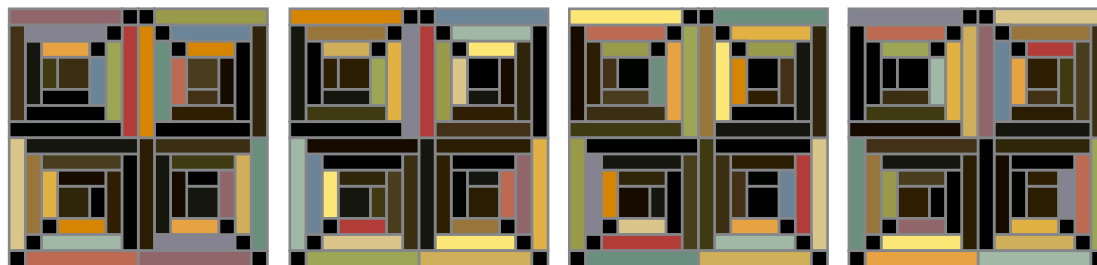
2. Referring to the Big Block diagram, join 4 Log Cabins to make a block. Be sure to orient the bright and black strips as shown to make the “V” design.
3. Referring to the Quilt Diagram, join 4 Big Blocks to make a horizontal row, paying attention to the orientation of the dark and bright prints. Make 5 rows. Stand back to be certain that the overall zigzag design is correct. Join the rows.

Finishing the Quilt

4. Layer the quilt with batting and backing and baste. Quilt in the ditch around block patches. Bind to finish the quilt.



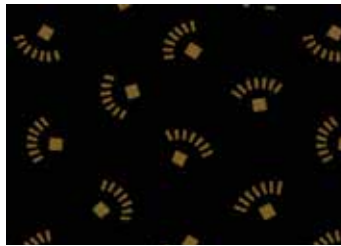
Big Block – Make 20



Quilt Diagram

Cast Iron

KATHY HALL



9300-K1



9301-K1



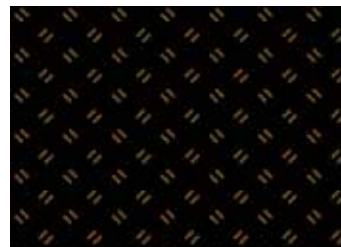
9302-K2



9303-K1



9304-K2



9305-K1



9306-K2



9307-K2



9308-K



9309-K



9310-K



9311-K



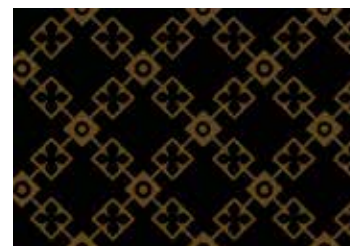
9312-K1



9313-K



9314-K



9315-K

Blend with additional Trinkets fabrics from Kathy Hall



8999-LN Fat ¼ yd



9003-P Fat ¼ yd



9004-N1 Fat ¼ yd



9004-R Fat ¼ yd



9013-N Fat ¼ yd



9015-G Fat ¼ yd



9015-Y Fat ¼ yd



9017-T Fat ¼ yd



9016-N Fat ¼ yd



9018-B Fat ¼ yd



9018-P Fat ¼ yd



9019-O Fat ¼ yd



9021-O Fat ¼ yd



9021-Y Fat ¼ yd



2022-G Fat ¼ yd



2022-T Fat ¼ yd

All fabrics are used in quilt pattern.
Fabrics shown are 100% of actual size.

andover

makower uk

Free Pattern Download Available

1384 Broadway New York, NY 10018
Tel. (800) 223-5678 • andoverfabrics.com